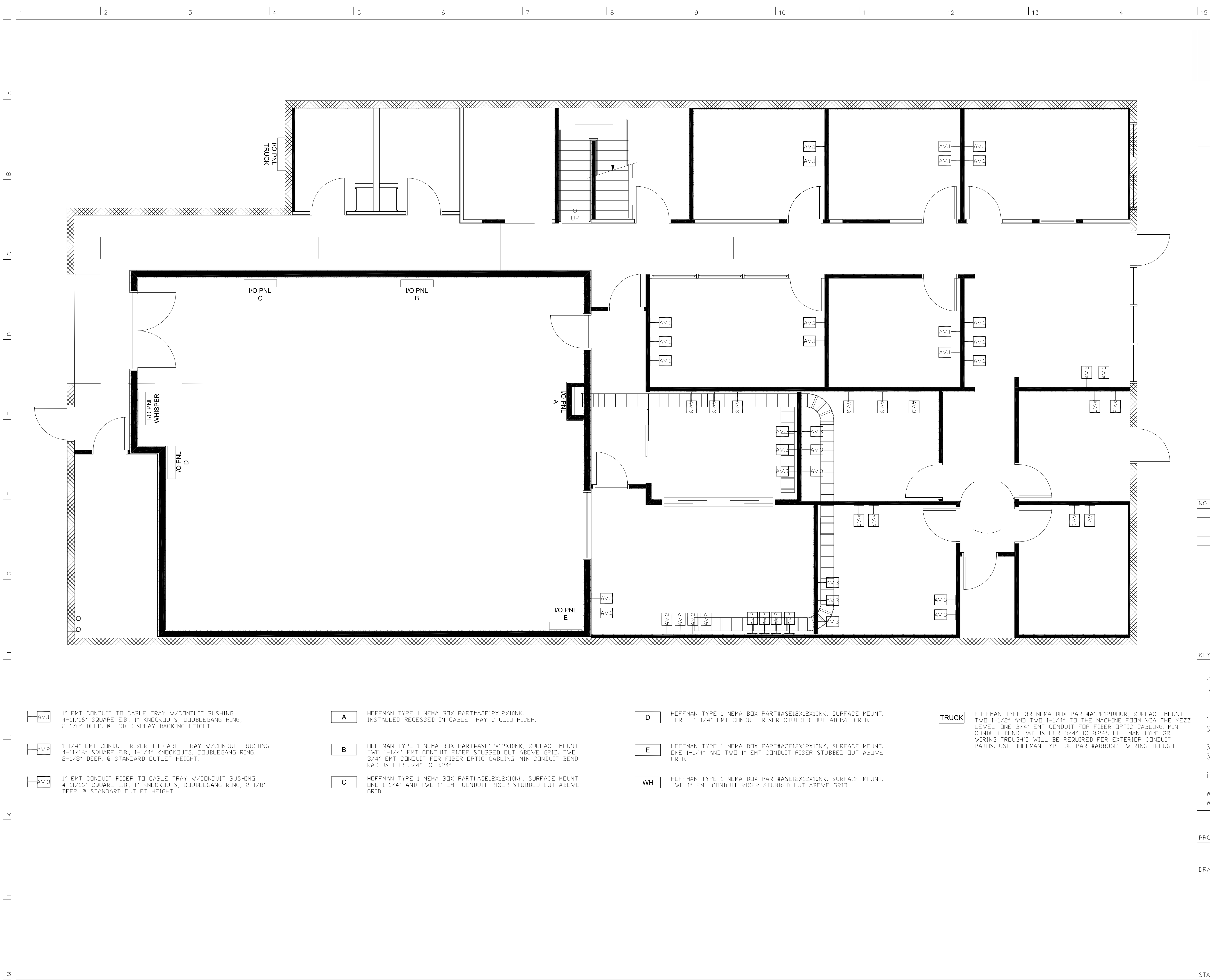


THESE DOCUMENTS AND THEIR CONTENT CONTAIN INFORMATION PROPRIETARY TO nonzero\architecture AND ARE PROTECTED BY LEGAL COPYRIGHTS. ALL RIGHTS RESERVED. © nonzero\architecture

**studio bauton**  
AUDIOVISUAL FACILITIES



NO	DESCRIPTION	BY	DATE	NO	DESCRIPTION	BY	DATE

KEYPLAN

nonzero\architecture  
PETER GRUENEISEN, FAIA

1528 B CLOVERFIELD BOULEVARD  
SANTA MONICA CALIFORNIA 90404

310 453 8000 telephone  
310 453 8001 fax

info@bauton.com  
www.nonzeroarch.com  
www.bauton.com

SANTA MONICA CITY TV CITY OF SANTA MONICA  
1654 19TH STREET, SANTA MONICA, CA 90404 PROJECT NO. 6619

AV INFRASTRUCTURE LAYOUT FIRST FLOOR

STAMP	DATE	06.02.09	PROJECT NO.	12-805	
	DRAWN	-			
	REVIEWED	-	DRAWING NO.		AV01
	SCALE	1/4" = 1'-0"			

**AV.1** 1" EMT CONDUIT TO CABLE TRAY W/CONDUIT BUSHING. 4-11/16" SQUARE E.B., 1" KNOCKOUTS, DOUBLEGANG RING, 2-1/8" DEEP. @ LCD DISPLAY BACKING HEIGHT.

**AV.2** 1-1/4" EMT CONDUIT RISER TO CABLE TRAY W/CONDUIT BUSHING. 4-11/16" SQUARE E.B., 1-1/4" KNOCKOUTS, DOUBLEGANG RING, 2-1/8" DEEP. @ STANDARD OUTLET HEIGHT.

**AV.3** 1" EMT CONDUIT RISER TO CABLE TRAY W/CONDUIT BUSHING. 4-11/16" SQUARE E.B., 1" KNOCKOUTS, DOUBLEGANG RING, 2-1/8" DEEP. @ STANDARD OUTLET HEIGHT.

**A** HOFFMAN TYPE 1 NEMA BDX PART#ASE12X12X10NK. INSTALLED RECESSED IN CABLE TRAY STUDIO RISER.

**B** HOFFMAN TYPE 1 NEMA BDX PART#ASE12X12X10NK, SURFACE MOUNT. TWO 1-1/4" EMT CONDUIT RISER STUBBED OUT ABOVE GRID. TWO 3/4" EMT CONDUIT FOR FIBER OPTIC CABLING. MIN CONDUIT BEND RADIUS FOR 3/4" IS 8.24".

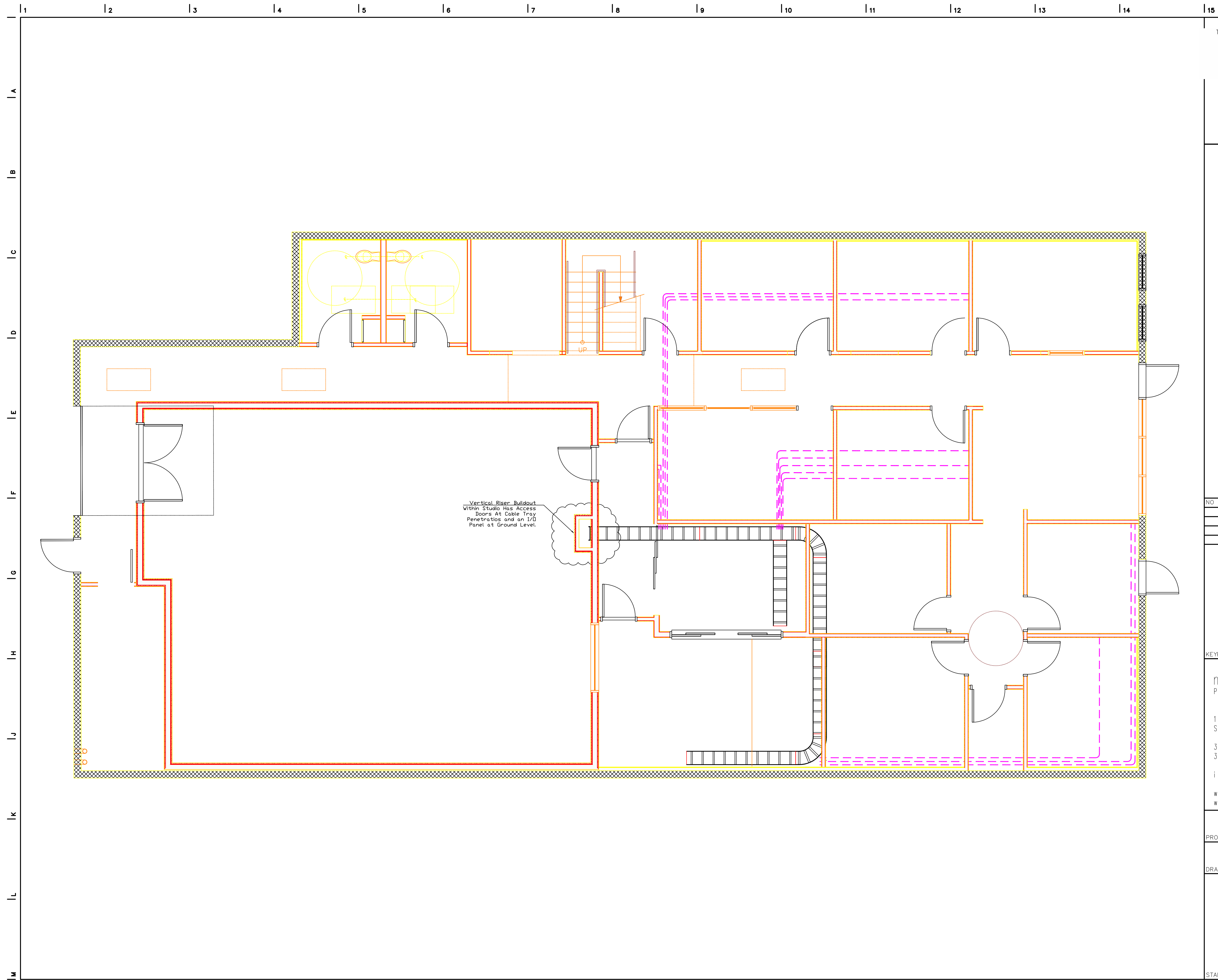
**C** HOFFMAN TYPE 1 NEMA BDX PART#ASE12X12X10NK, SURFACE MOUNT. ONE 1-1/4" AND TWO 1" EMT CONDUIT RISER STUBBED OUT ABOVE GRID.

**D** HOFFMAN TYPE 1 NEMA BDX PART#ASE12X12X10NK, SURFACE MOUNT. THREE 1-1/4" EMT CONDUIT RISER STUBBED OUT ABOVE GRID.

**E** HOFFMAN TYPE 1 NEMA BDX PART#ASE12X12X10NK, SURFACE MOUNT. ONE 1-1/4" AND TWO 1" EMT CONDUIT RISER STUBBED OUT ABOVE GRID.

**WH** HOFFMAN TYPE 1 NEMA BDX PART#ASE12X12X10NK, SURFACE MOUNT. TWO 1" EMT CONDUIT RISER STUBBED OUT ABOVE GRID.

**TRUCK** HOFFMAN TYPE 3R NEMA BOX PART#A12R1210HCR, SURFACE MOUNT. TWO 1-1/2" AND TWO 1-1/4" TO THE MACHINE ROOM VIA THE MEZZ LEVEL. ONE 3/4" EMT CONDUIT FOR FIBER OPTIC CABLING. MIN CONDUIT BEND RADIUS FOR 3/4" IS 8.24". HOFFMAN TYPE 3R WIRING TROUGH'S WILL BE REQUIRED FOR EXTERIOR CONDUIT PATHS. USE HOFFMAN TYPE 3R PART#A8836RT WIRING TROUGH.



THESE DOCUMENTS AND THEIR CONTENT CONTAIN INFORMATION PROPRIETARY TO nonzero\architecture AND ARE PROTECTED BY LEGAL COPYRIGHTS. ALL RIGHTS RESERVED. © nonzero\architecture

**studio bauton**  
AUDIOVISUAL FACILITIES

NO.	DESCRIPTION	BY	DATE	NO.	DESCRIPTION	BY	DATE

KEYPLAN

nonzero\architecture  
PETER GRUENEISEN, FAIA

1528 B CLOVERFIELD BOULEVARD  
SANTA MONICA CALIFORNIA 90404

310 453 8000 telephone  
310 453 8001 fax

info@bauton.com

www.nonzeroarch.com  
www.bauton.com

SANTA MONICA CITY TV CITY OF SANTA MONICA  
1654 19TH STREET, SANTA MONICA, CA 90404 PROJECT NO. 6619  
PROJECT

CABLE PATHS FIRST FLOOR

DRAWING

06.02.09

DATE

12-805  
PROJECT NO.

-

DRAWN

-

REVIEWED

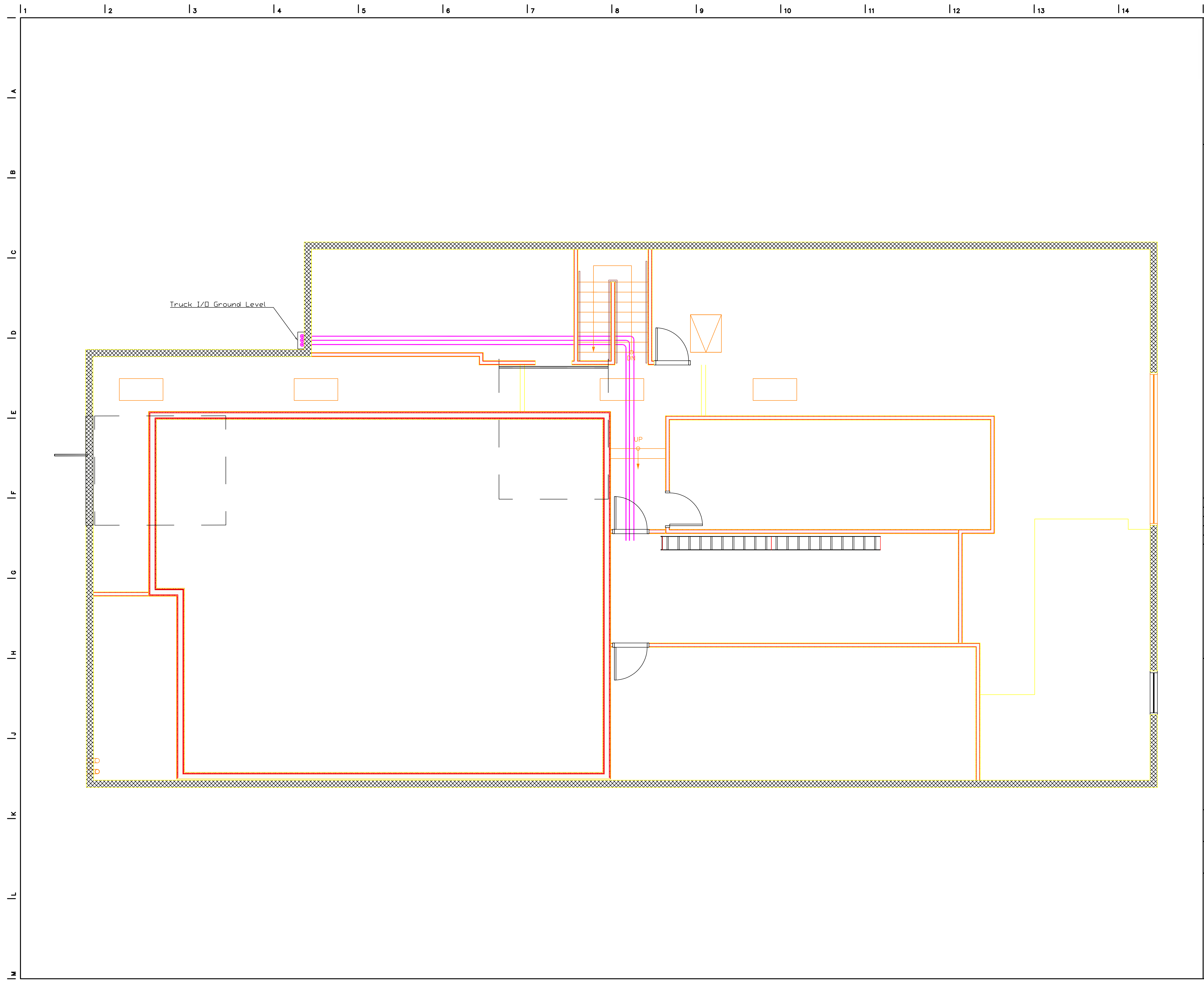
1/4" = 1'-0"

SCALE

AV02

DRAWING NO.

STAMP



THESE DOCUMENTS AND THEIR CONTENT CONTAIN INFORMATION PROPRIETARY TO nonzero\architecture AND ARE PROTECTED BY LEGAL COPYRIGHTS. ALL RIGHTS RESERVED. © nonzero\architecture

**studio bauton**  
AUDIOVISUAL FACILITIES

NO.	DESCRIPTION	BY	DATE	NO.	DESCRIPTION	BY	DATE

KEYPLAN

nonzero\architecture  
PETER GRUENEISEN, FAIA

1528 B CLOVERFIELD BOULEVARD  
SANTA MONICA CALIFORNIA 90404

310 453 8000 telephone  
310 453 8001 fax

info@bauton.com

www.nonzeroarch.com  
www.bauton.com

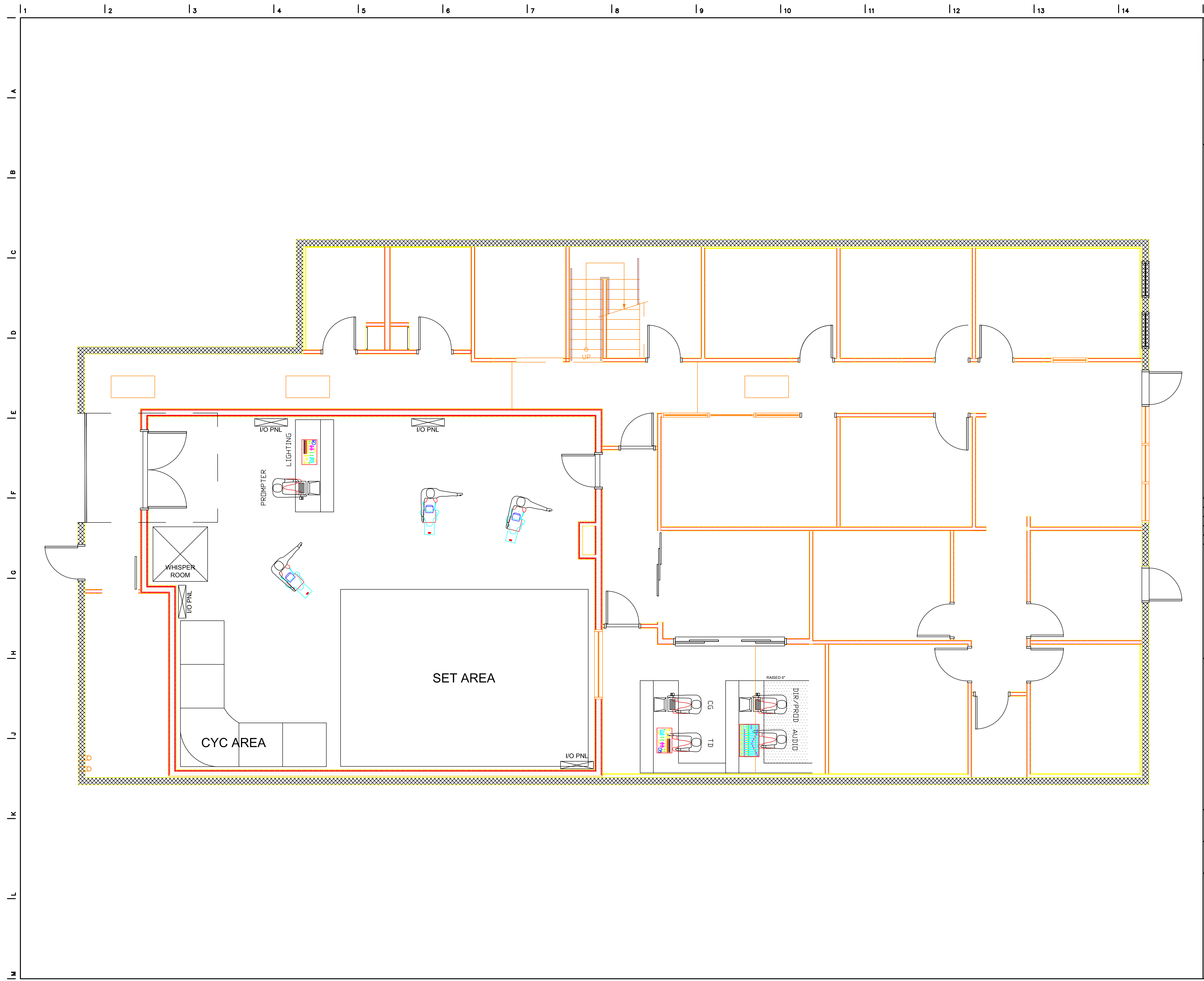
SANTA MONICA CITY TV PROJECT  
1654 19TH STREET, SANTA MONICA, CA 90404

CITY OF SANTA MONICA  
PROJECT NO. 6619

CABLE PATHS ATTIC MECH AREA

DRAWING	DATE	12-805
	DRAWN	PROJECT NO.
	REVIEWED	AV03
	SCALE	DRAWING NO.

STAMP



THESE DOCUMENTS AND THEIR CONTENT CONTAIN INFORMATION PROPRIETARY TO nonzero\architecture AND ARE PROTECTED BY LEGAL COPYRIGHTS. ALL RIGHTS RESERVED. © nonzero\architecture

**studio bauton**  
AUDIOVISUAL FACILITIES

NO.	DESCRIPTION	BY	DATE	NO.	DESCRIPTION	BY	DATE

KEYPLAN

nonzero\architecture  
PETER GRUENEISEN, FAIA

1528 B CLOVERFIELD BOULEVARD  
SANTA MONICA CALIFORNIA 90404

310 453 8000 telephone  
310 453 8001 fax

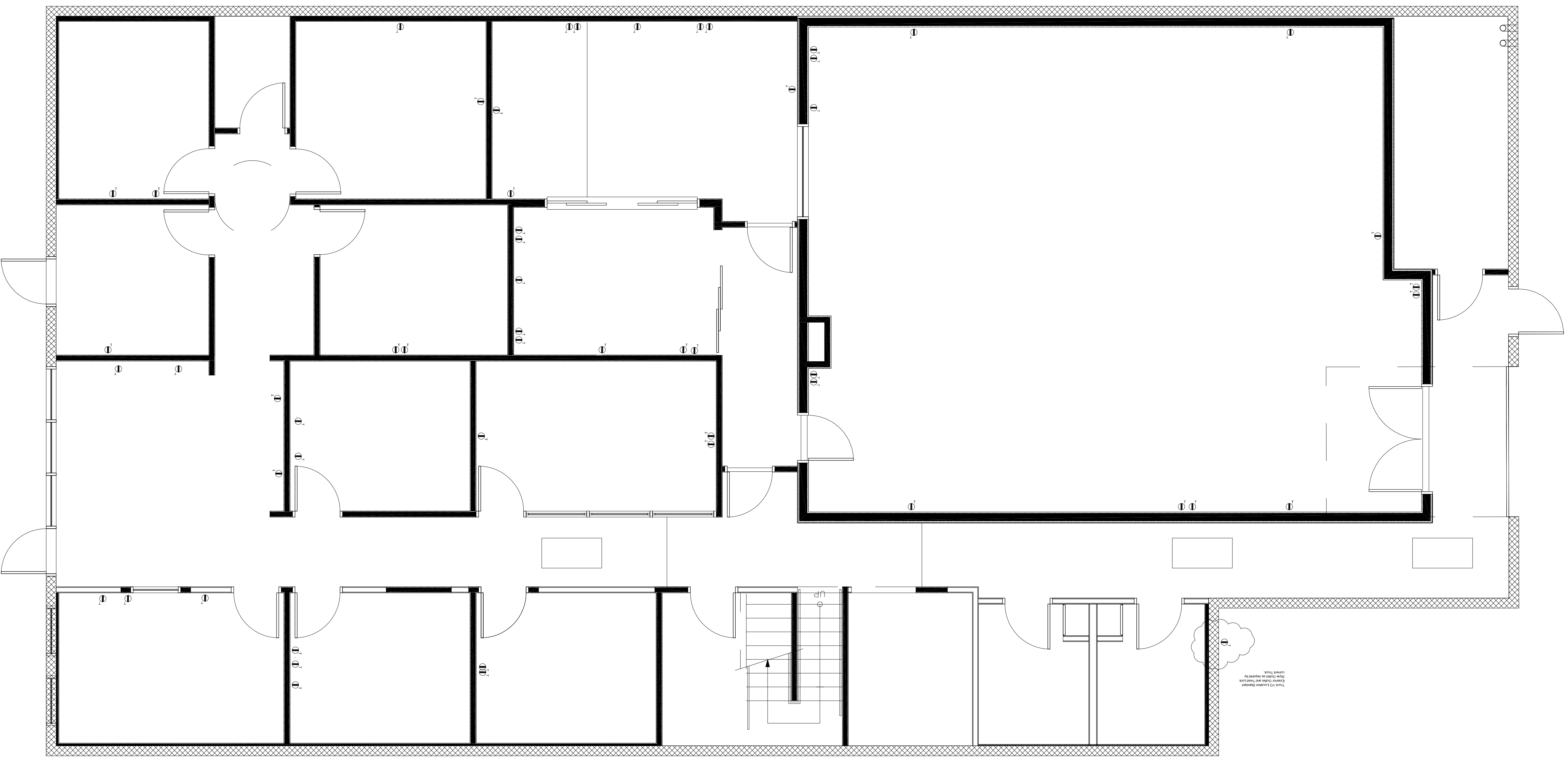
info@bauton.com

www.nonzeroarch.com  
www.bauton.com

SANTA MONICA CITY TV      CITY OF SANTA MONICA  
1654 19TH STREET, SANTA MONICA, CA 90404      PROJECT NO. 6619

LAYOUT PROPOSAL FIRST FLOOR

DRAWING	DATE	06.02.09	PROJECT NO. 12-805
	DRAWN	-	
	REVIEWED	-	
	SCALE	1/4" = 1'-0"	
STAMP			DRAWING NO. <b>AV04</b>



DRAWING	DATE	06.02.09
	PROJECT NO.	12-805
	DRAWN	-
STAMP	REVIEWED	-
	SCALE	1/4" = 1'-0"
	DRAWING NO.	AV10

TECH POWER FIRST FLOOR

PROJECT  
 SANTA MONICA CITY TV  
 1654 19TH STREET, SANTA MONICA, CA 90404  
 CITY OF SANTA MONICA  
 PROJECT NO. 6619

nonzero architecture  
 PETER GRUENEISEN, FAIA  
 1528 B CLOVERFIELD BOULEVARD  
 SANTA MONICA CALIFORNIA 90404  
 310 453 8000 telephone  
 310 453 8001 fax  
 info@bouton.com  
 www.nonzeroarch.com  
 www.bouton.com

KEYPLAN

NO	DESCRIPTION	BY	DATE

NO	DESCRIPTION	BY	DATE

THESE DOCUMENTS AND THEIR CONTENT CONTAIN INFORMATION PROPRIETARY TO  
 nonzeroarchitecture AND ARE PROTECTED BY LEGAL COPYRIGHTS.  
 ALL RIGHTS RESERVED. © nonzeroarchitecture  
**studio bouton**  
 AUDIVISUAL FACILITIES  
 Bitmap3326695409.jpg

15 | 14 | 13 | 12 | 11 | 10 | 9 | 8 | 7 | 6 | 5 | 4 | 3 | 2 | 1 | A | B | C | D | E | F | G | H | J | K | L | M

15 | 14 | 13 | 12 | 11 | 10 | 9 | 8 | 7 | 6 | 5 | 4 | 3 | 2 | 1

THESE DOCUMENTS AND THEIR CONTENT CONTAIN INFORMATION PROPRIETARY TO  
nonzero\architecture AND ARE PROTECTED BY LEGAL COPYRIGHTS.  
nonzero\architecture ALL RIGHTS RESERVED. © nonzero\architecture

**studio bauton**  
AUDI VISUAL FACILITIES

NO	DESCRIPTION	BY	DATE	NO.	DESCRIPTION	BY	DATE

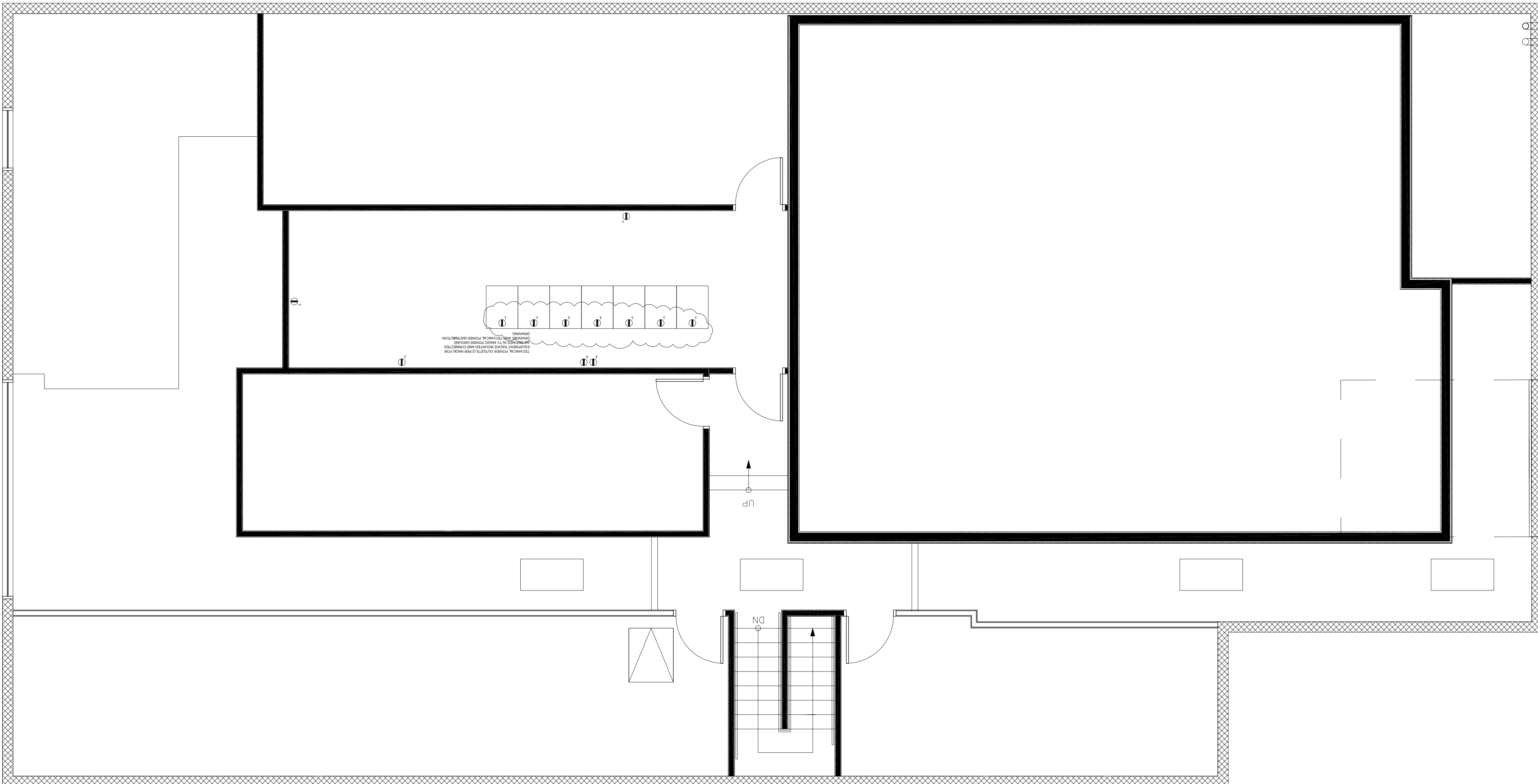
KEYPLAN

nonzero\architecture  
PETER GRUENEISEN, FAIA  
1528 B CLOVERFIELD BOULEVARD  
SANTA MONICA CALIFORNIA 90404  
310 453 8000 telephone  
310 453 8001 fax  
info@bauton.com  
www.nonzeroarch.com  
www.bauton.com

PROJECT  
SANTA MONICA CITY TV  
1654 19TH STREET, SANTA MONICA, CA 90404  
CITY OF SANTA MONICA  
PROJECT NO. 6619

DRAWING  
TECH POWER ATTIC MECH AREA

DATE	06.02.09	PROJECT NO.	12-805
DRAWN	-	SCALE	1/4" = 1'-0"
REVIEWED	-	DRAWING NO.	AV11



A | B | C | D | E | F | G | H | J | K | L | M

THESE DOCUMENTS AND THEIR CONTENT CONTAIN INFORMATION PROPRIETARY TO nonzeroarchitecture AND ARE PROTECTED BY LEGAL COPYRIGHTS. nonzeroarchitecture © nonzeroarchitecture. ALL RIGHTS RESERVED.

**studio bau:ton**  
ADVISORY FACILITIES

NO	DESCRIPTION	BY	DATE	NO	DESCRIPTION	BY	DATE

KEYPLAN

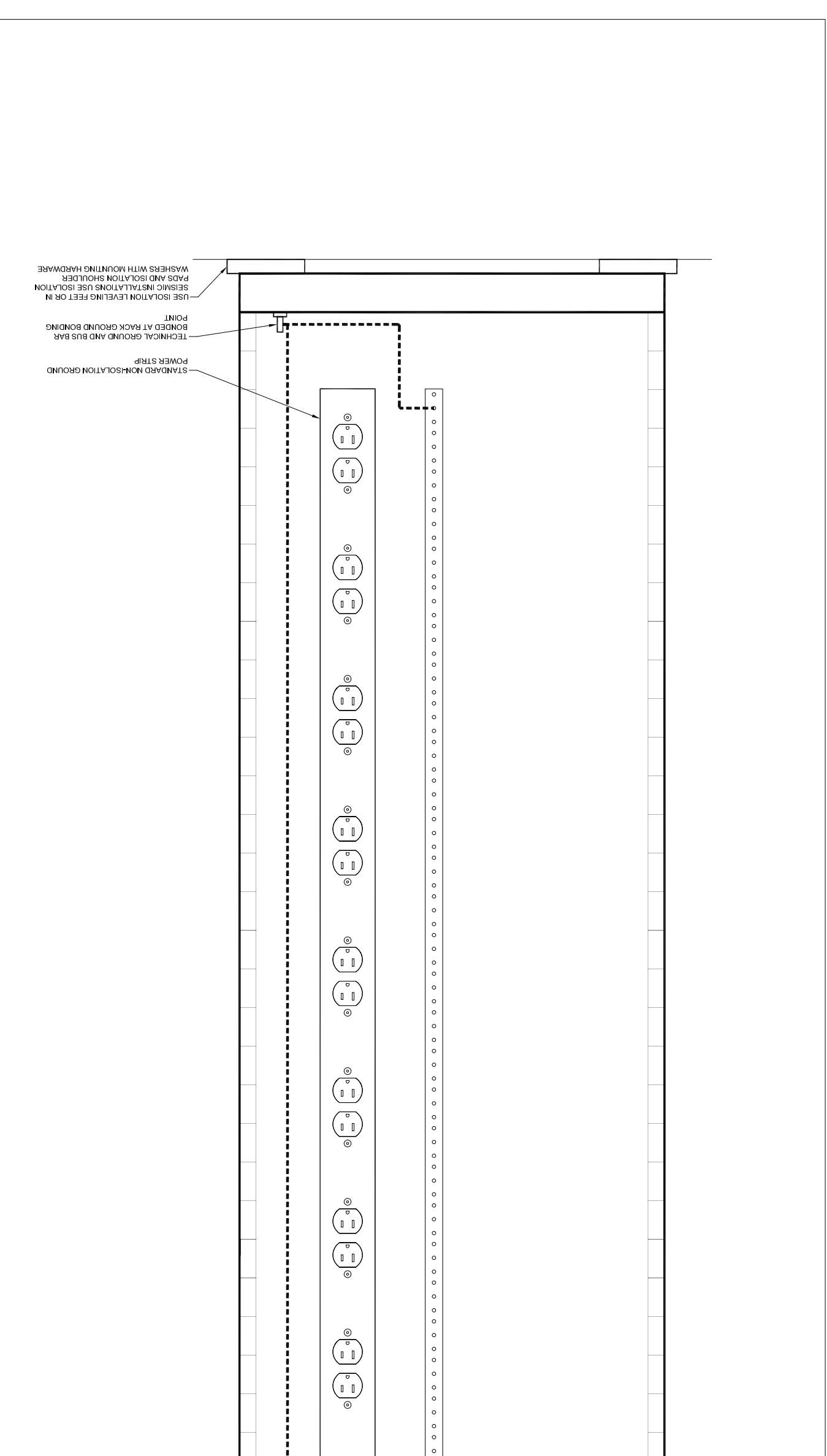
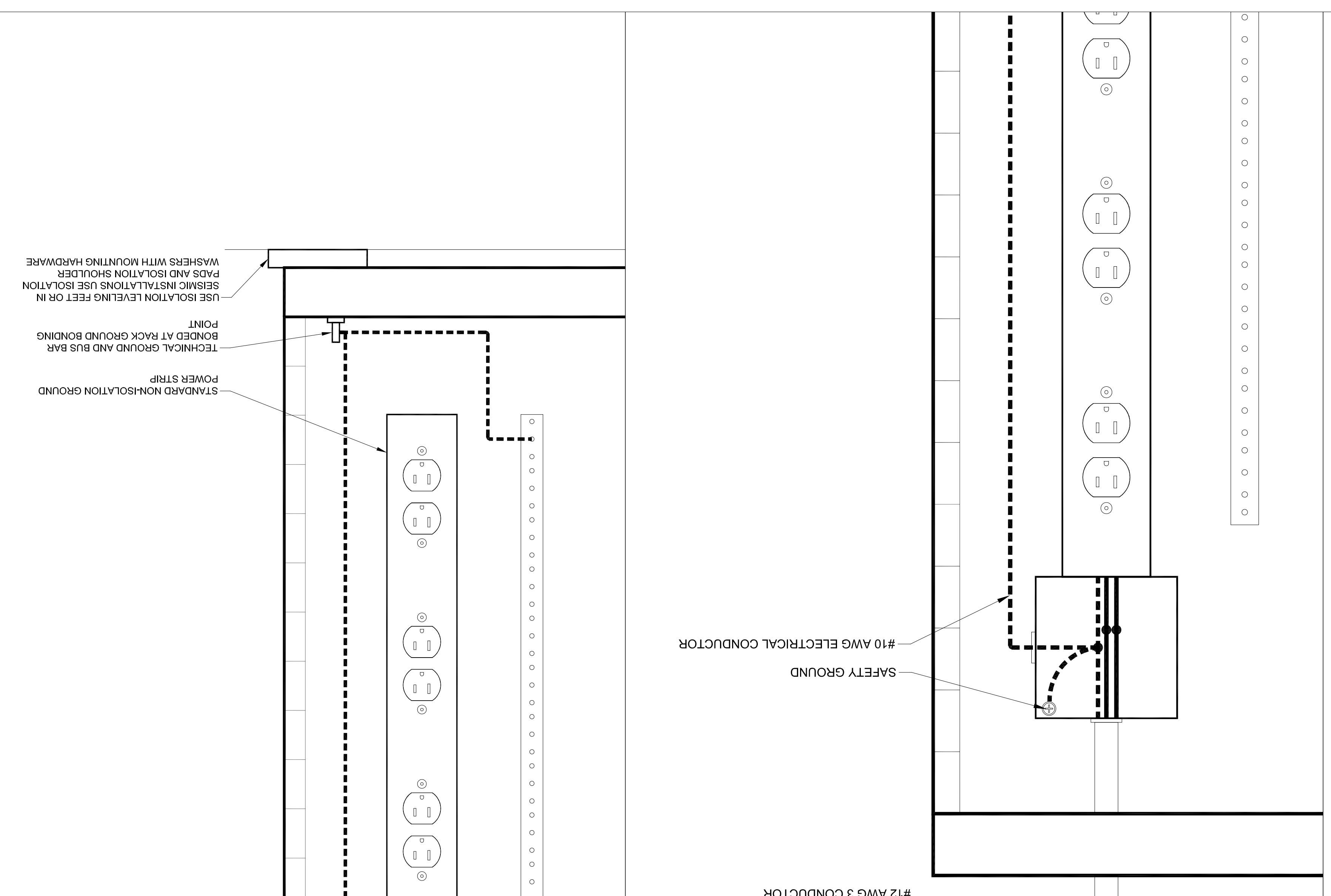
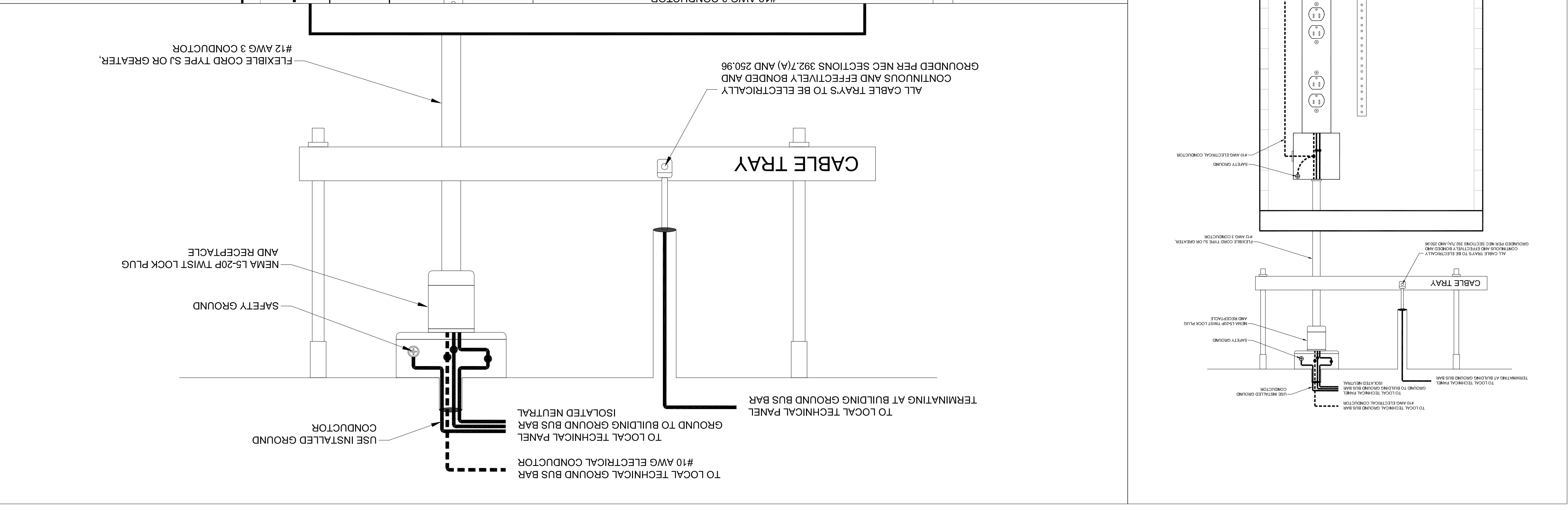
**nonzero architecture**  
PETER GRUENISEN, FAIA  
1528 B CLOVERFIELD BOULEVARD  
SANTA MONICA CALIFORNIA 90404  
310 453 8000 telephone  
310 453 8001 fax  
info@bau:ton.com  
www.nonzeroarch.com  
www.bau:ton.com

**SANTA MONICA CITY TV**  
CITY OF SANTA MONICA  
PROJECT NO. 6619  
1654 19TH STREET, SANTA MONICA, CA 90404

**TECH POWER GROUNDING**

DATE 06.02.09  
PROJECT NO. 12-805  
DRAWING  
DRAWN -  
REVIEWED -  
SCALE 1/4" = 1'-0"  
DRAWING NO. AV12

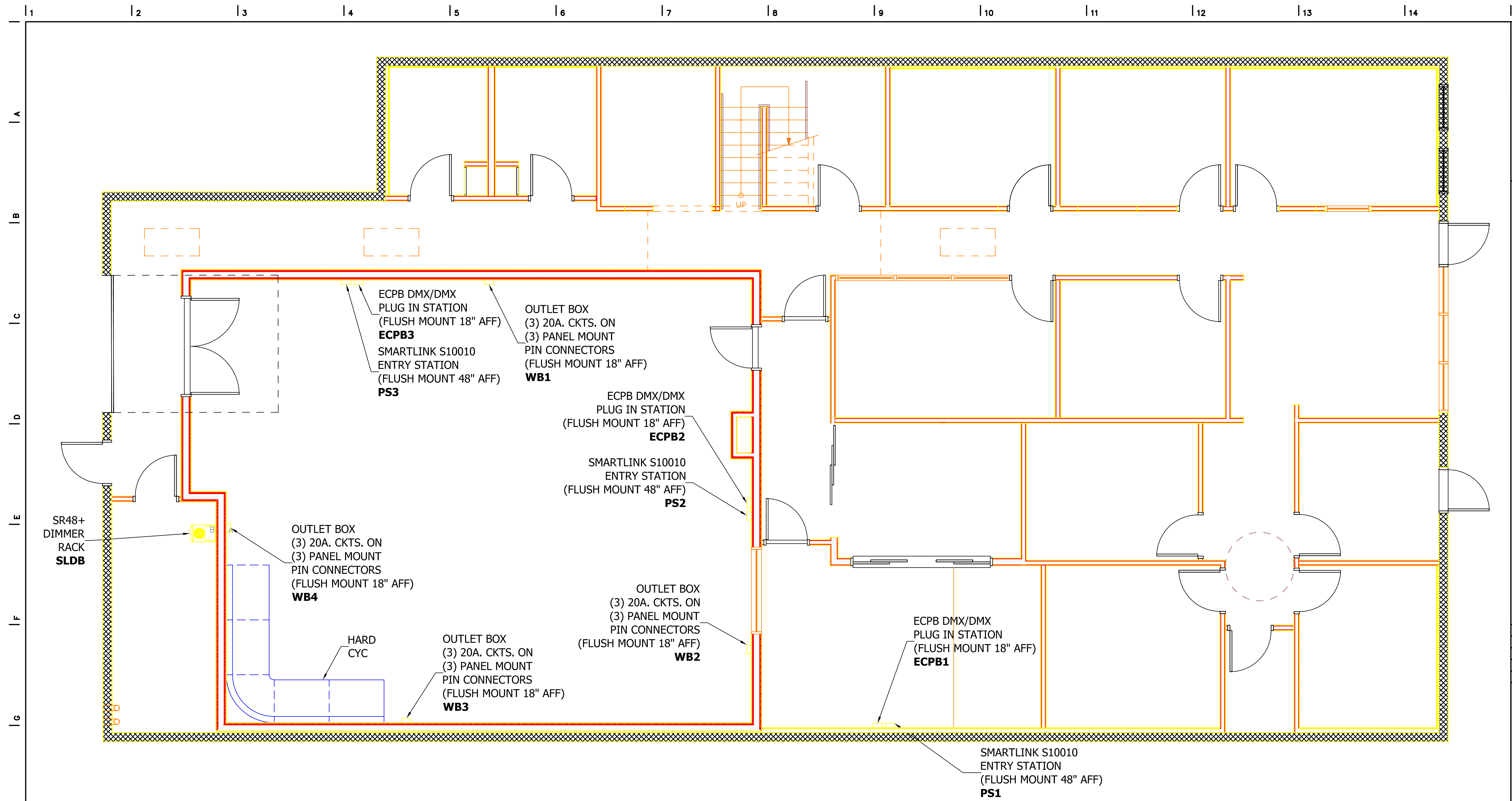
15 | 14 | 13 | 12 | 11 | 10 | 9 | 8 | 7 | 6 | 5 | 4 | 3 | 2 | 1



1 M | L L | L K | L J | L H | L G | L F | L E | L D | L C | L B | L A







THESE DOCUMENTS AND THEIR CONTENT CONTAIN INFORMATION PROPRIETARY TO nonzero\architecture AND ARE PROTECTED BY LEGAL COPYRIGHTS. ALL RIGHTS RESERVED. © nonzero\architecture

**studio bauton**  
AUDIOVISUAL FACILITIES

NO.	DESCRIPTION	BY	DATE	NO.	DESCRIPTION	BY	DATE

KEYPLAN

nonzero\architecture  
PETER GRUENEISEN, FAIA

1528 B CLOVERFIELD BOULEVARD  
SANTA MONICA CALIFORNIA 90404

310 453 8000 telephone  
310 453 8001 fax

info@bauton.com

www.nonzeroarch.com  
www.bauton.com

SANTA MONICA CITY TV PROJECT  
1654 19TH STREET, SANTA MONICA, CA 90404

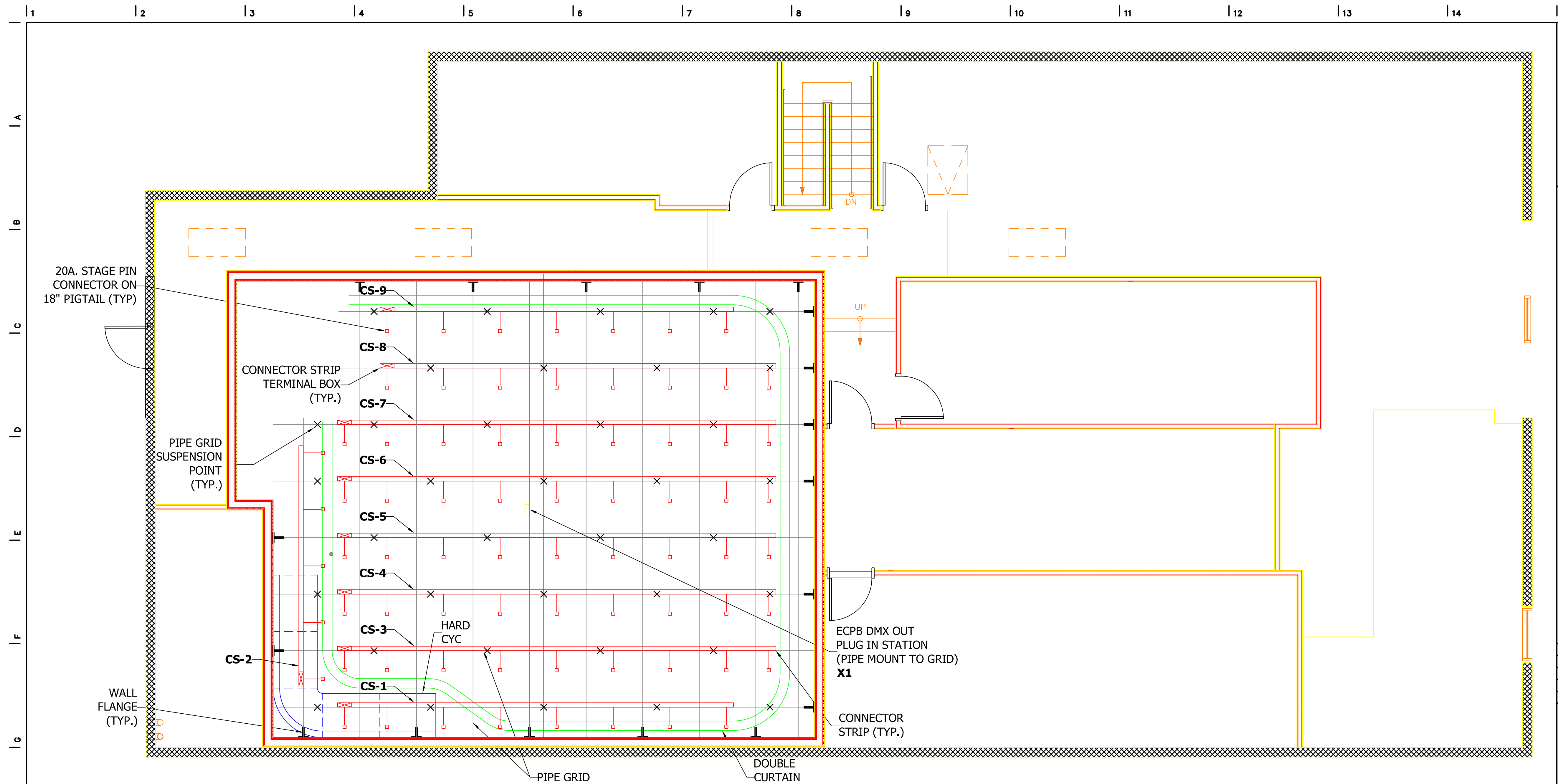
CITY OF SANTA MONICA PROJECT NO. 6619

DRAWING		DATE	PROJECT NO.
		06.02.09	12-805
		-	AV21
		-	
		-	
		1/4" = 1'-0"	DRAWING NO.
		SCALE	

STAMP

- NOTES:
- 1.) ALL STUDIO LIGHTING CIRCUITS REQUIRE SEPARATE NEUTRALS.
  - 2.) ALL STANDARD BACK BOXES TO BE PROVIDED BY ELECTRICAL CONTRACTOR. USE RACO 690 SERIES (DEEP)
  - 3.) ALL CONTROL AND DISTRIBUTION CONDUIT AND WIRING TO BE PROVIDED, INSTALLED, PULLED, AND LABELED BY ELECTRICAL CONTRACTOR.
  - 4.) LOCATE DUPLEX OUTLET NEXT TO ALL ECPB CONSOLE PLUG IN STATIONS.
  - 5.) HARD CYCLORAMA TO BE BUILT INTO STUDIO WALLS AND INSTALLED AND FINISHED BY GC / DRYWALL CONTRACTOR.

# FLOOR PLAN



- NOTES:
- 1.) ALL STUDIO LIGHTING CIRCUITS REQUIRE SEPARATE NEUTRALS.
  - 2.) ALL STANDARD BACK BOXES TO BE PROVIDED BY ELECTRICAL CONTRACTOR. USE RACO 690 SERIES (DEEP).
  - 3.) ALL CONTROL AND DISTRIBUTION CONDUIT AND WIRING TO BE PROVIDED, INSTALLED, PULLED, AND LABELED BY ELECTRICAL CONTRACTOR.
  - 4.) GRID HEIGHT IS APPROXIMATELY 13'-0" AFF, COORDINATE EXACT HEIGHT IN FIELD.
  - 5.) PIPE GRID OVERLAP BRACKETS TO BE USED AT EVERY INTERSECTION ON THE PIPE GRID PERIMETER, EVERY OTHER INTERSECTION ON PIPE GRID INTERIOR.
  - 6.) PIPE GRID WALL FLANGES TO CONNECT TO WALL BLOCKING (BY OTHERS).
  - 7.) CONNECTOR STRIPS TO BE SUPPORTED BY, AND MOUNTED ABOVE PIPE GRID.
  - 8.) NO CONDUITS OR BRANCH CIRCUIT WIREWAYS TO BE SUPPORTED FROM PIPE GRID.
  - 9.) HARD CYLORAMA TO BE BUILT INTO STUDIO WALLS AND INSTALLED ANF FINISHED BY GC / DRYWALL CONTRACTOR.

# RCP PLAN

NO	DESCRIPTION	BY	DATE	NO	DESCRIPTION	BY	DATE

KEYPLAN

nonzero\architecture  
 PETER GRUENEISEN, FAIA

1528 B CLOVERFIELD BOULEVARD  
 SANTA MONICA CALIFORNIA 90404

310 453 8000 telephone  
 310 453 8001 fax

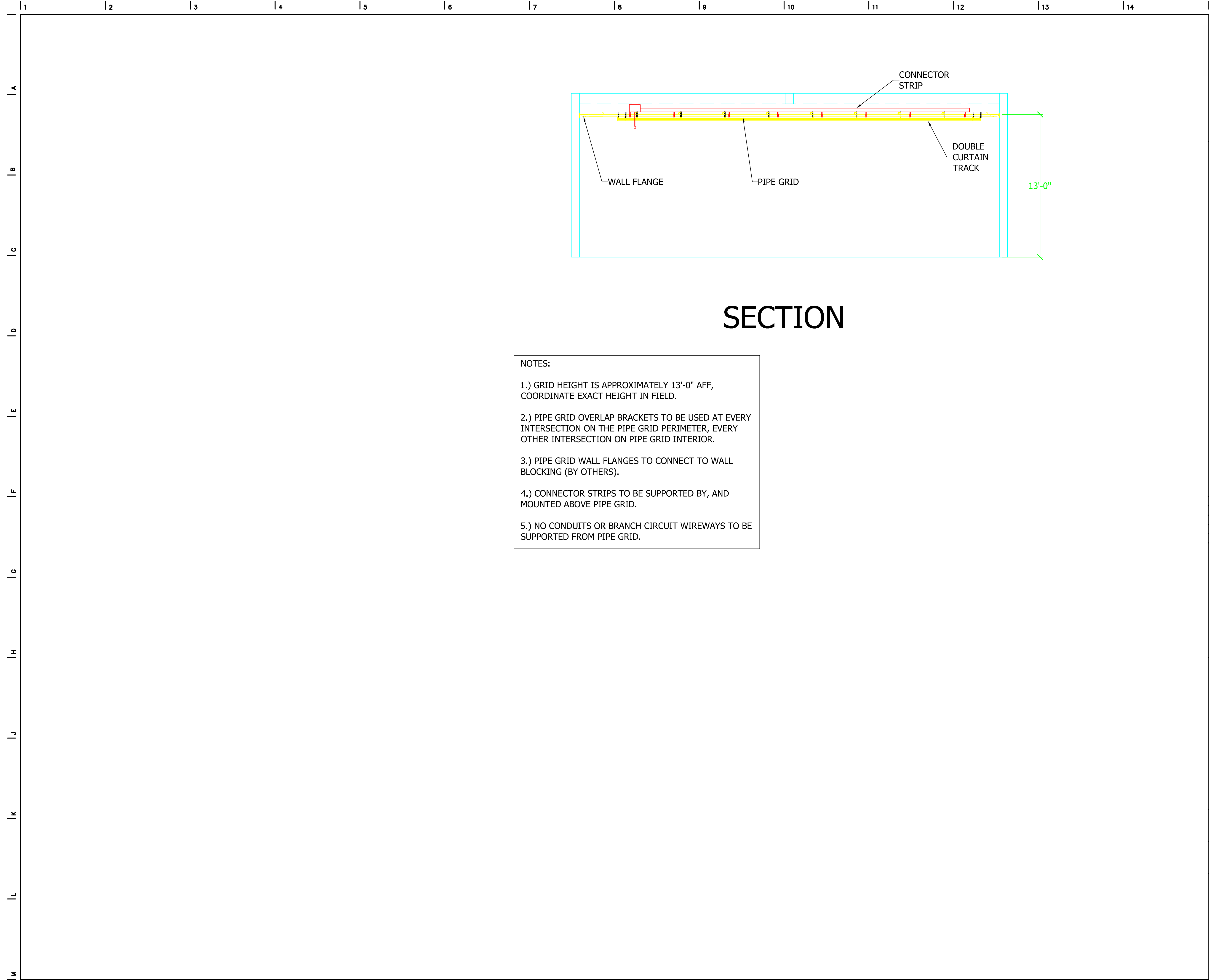
info@bauton.com

www.nonzeroarch.com  
 www.bauton.com

SANTA MONICA CITY TV CITY OF SANTA MONICA  
 1654 19TH STREET, SANTA MONICA, CA 90404 PROJECT NO. 6619

PROJECT LIGHTING RCP DEVICES

DRAWING	DATE	06.02.09	PROJECT NO. 12-805
	DRAWN	-	
	REVIEWED	-	
	SCALE	1/4" = 1'-0"	
STAMP	DRAWING NO.		AV22



# SECTION

- NOTES:**
- 1.) GRID HEIGHT IS APPROXIMATELY 13'-0" AFF, COORDINATE EXACT HEIGHT IN FIELD.
  - 2.) PIPE GRID OVERLAP BRACKETS TO BE USED AT EVERY INTERSECTION ON THE PIPE GRID PERIMETER, EVERY OTHER INTERSECTION ON PIPE GRID INTERIOR.
  - 3.) PIPE GRID WALL FLANGES TO CONNECT TO WALL BLOCKING (BY OTHERS).
  - 4.) CONNECTOR STRIPS TO BE SUPPORTED BY, AND MOUNTED ABOVE PIPE GRID.
  - 5.) NO CONDUITS OR BRANCH CIRCUIT WIREWAYS TO BE SUPPORTED FROM PIPE GRID.

THESE DOCUMENTS AND THEIR CONTENT CONTAIN INFORMATION PROPRIETARY TO nonzero\architecture AND ARE PROTECTED BY LEGAL COPYRIGHTS. ALL RIGHTS RESERVED. © nonzero\architecture

**studio bauton**  
AUDIOVISUAL FACILITIES

NO	DESCRIPTION	BY	DATE	NO	DESCRIPTION	BY	DATE

KEYPLAN

nonzero\architecture  
PETER GRUENEISEN, FAIA

1528 B CLOVERFIELD BOULEVARD  
SANTA MONICA CALIFORNIA 90404

310 453 8000 telephone  
310 453 8001 fax

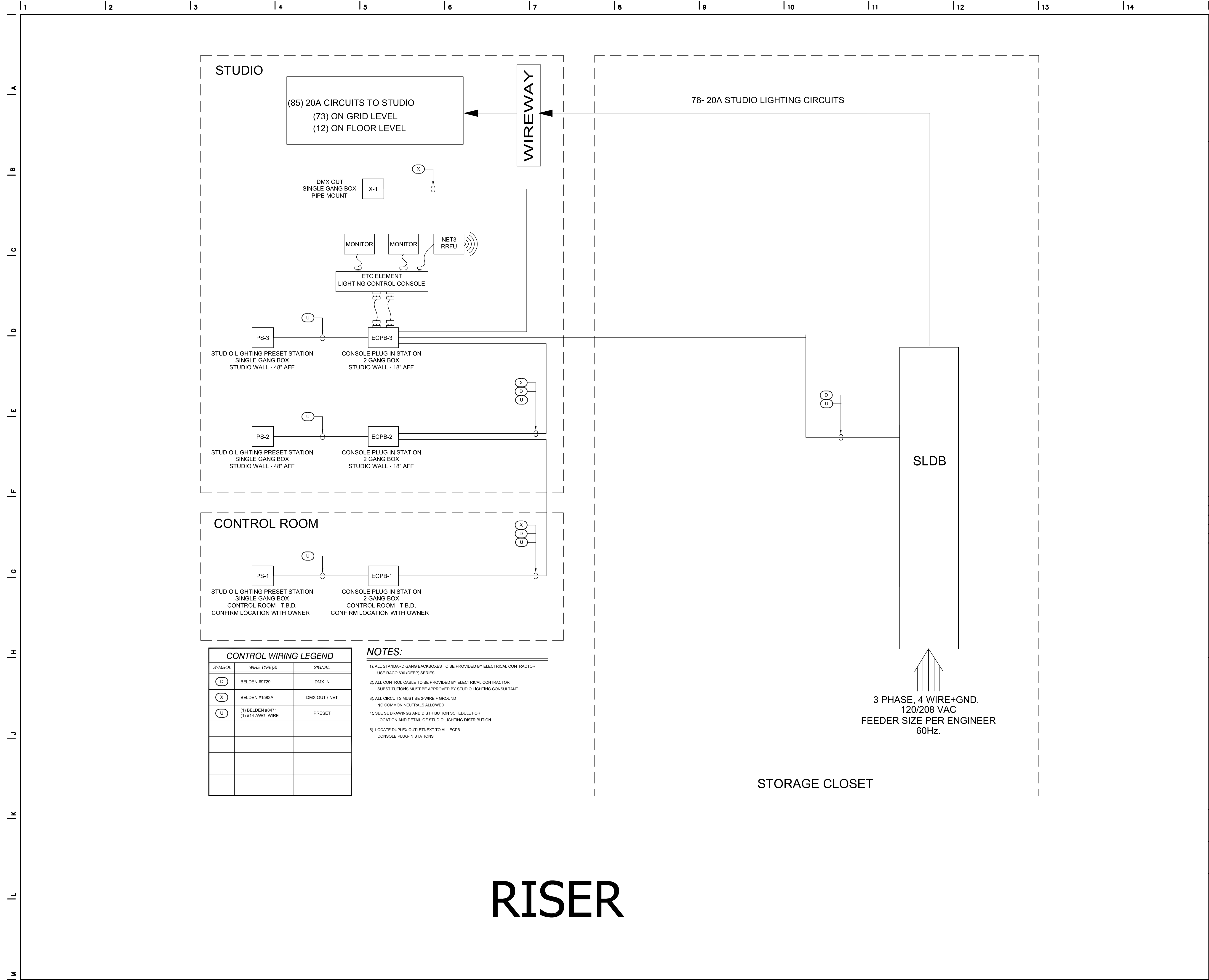
info@bauton.com

www.nonzeroarch.com  
www.bauton.com

SANTA MONICA CITY TV CITY OF SANTA MONICA  
1654 19TH STREET, SANTA MONICA, CA 90404 PROJECT NO. 6619

LIGHTING SECTION

DRAWING	DATE	06.02.09	PROJECT NO. 12-805
	DRAWN	-	
	REVIEWED	-	
	SCALE	1/4" = 1'-0"	
STAMP	DRAWING NO.		AV23



# RISER

THESE DOCUMENTS AND THEIR CONTENT CONTAIN INFORMATION PROPRIETARY TO nonzero\architecture AND ARE PROTECTED BY LEGAL COPYRIGHTS. ALL RIGHTS RESERVED. © nonzero\architecture

**studio bauton**  
AUDIOVISUAL FACILITIES

NO.	DESCRIPTION	BY	DATE	NO.	DESCRIPTION	BY	DATE

KEYPLAN

nonzero\architecture  
PETER GRUENEISEN, FAIA

1528 B CLOVERFIELD BOULEVARD  
SANTA MONICA CALIFORNIA 90404

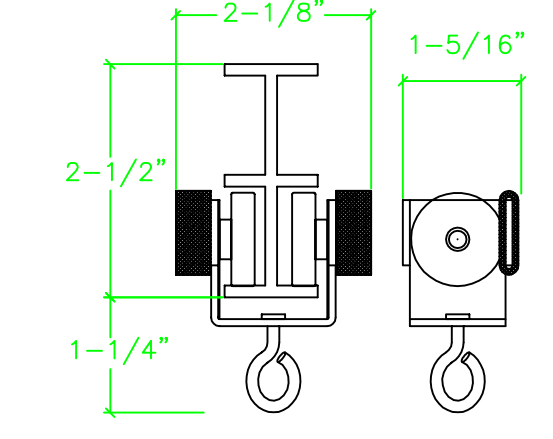
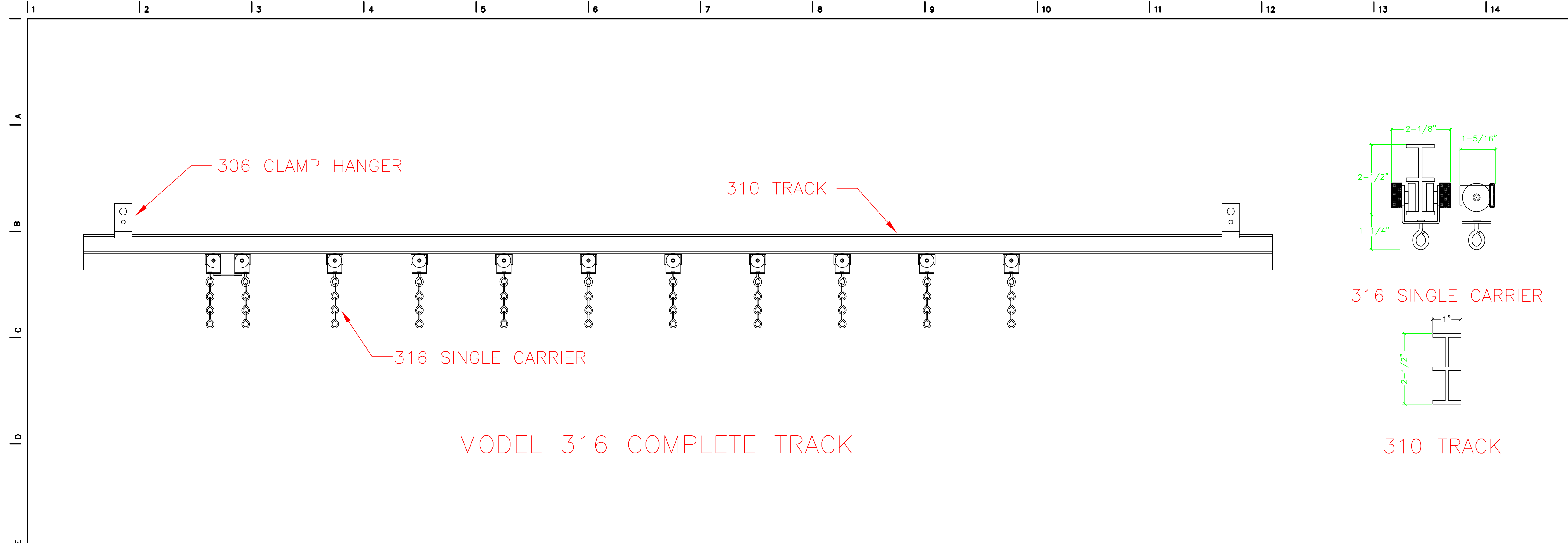
310 453 8000 telephone  
310 453 8001 fax

info@bauton.com

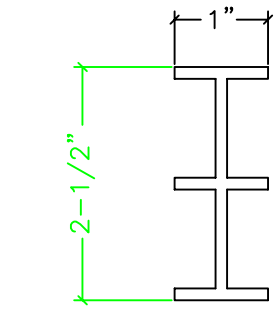
www.nonzeroarch.com  
www.bauton.com

SANTA MONICA CITY TV      CITY OF SANTA MONICA  
1654 19TH STREET, SANTA MONICA, CA 90404      PROJECT NO. 6619

PROJECT		LIGHTING RISER	
DRAWING		DATE	PROJECT NO.
		06.02.09	12-805
		DRAWN	AV24
		REVIEWED	
		SCALE	
STAMP		1/4" = 1'-0"	DRAWING NO.

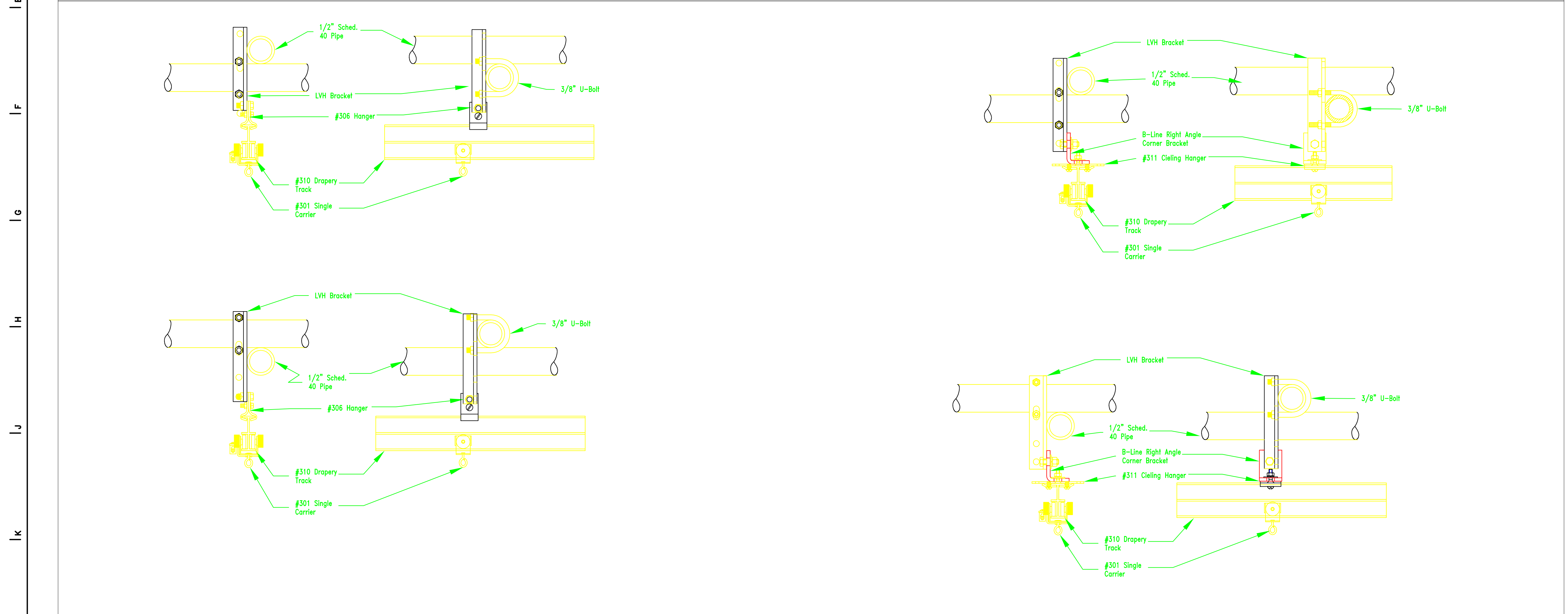


316 SINGLE CARRIER



310 TRACK

MODEL 316 COMPLETE TRACK



NO.	DESCRIPTION	BY	DATE	NO.	DESCRIPTION	BY	DATE

KEYPLAN

nonzero\architecture  
PETER GRUENEISEN, FAIA

1528 B CLOVERFIELD BOULEVARD  
SANTA MONICA CALIFORNIA 90404

310 453 8000 telephone  
310 453 8001 fax

info@bauton.com

www.nonzeroarch.com  
www.bauton.com

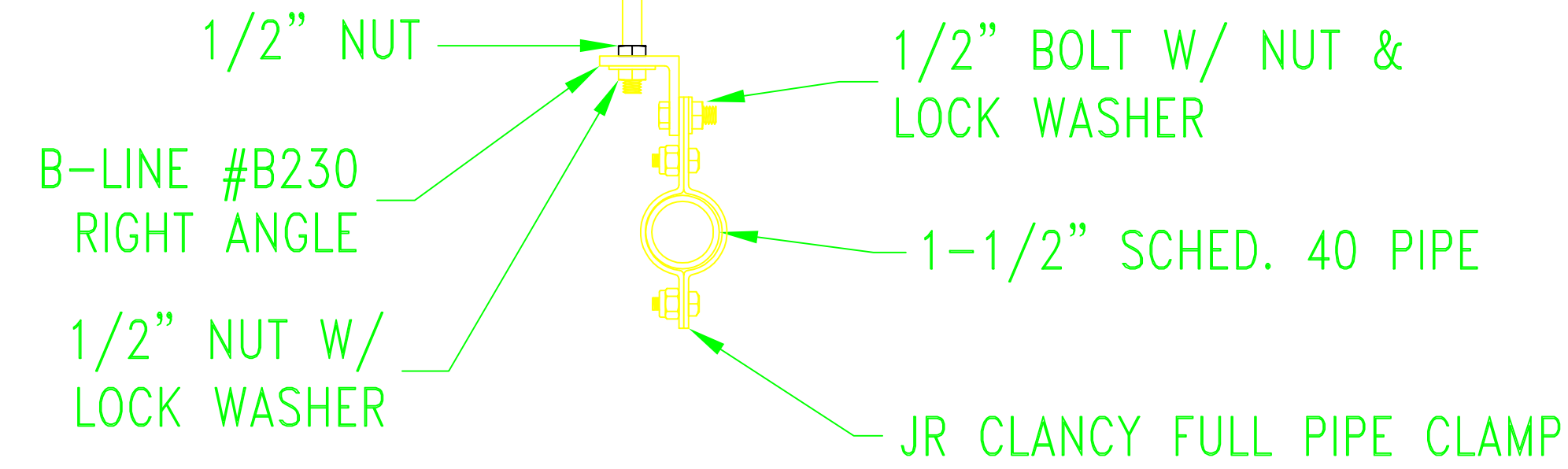
SANTA MONICA CITY TV PROJECT  
1654 19TH STREET, SANTA MONICA, CA 90404

CITY OF SANTA MONICA PROJECT NO. 6619

LIGHTING TRACK DETAILS

DRAWING	DATE	06.02.09	PROJECT NO. 12-805
	DRAWN	-	
	REVIEWED	-	
	SCALE	1/4" = 1'-0"	
STAMP			DRAWING NO. <b>AV25</b>

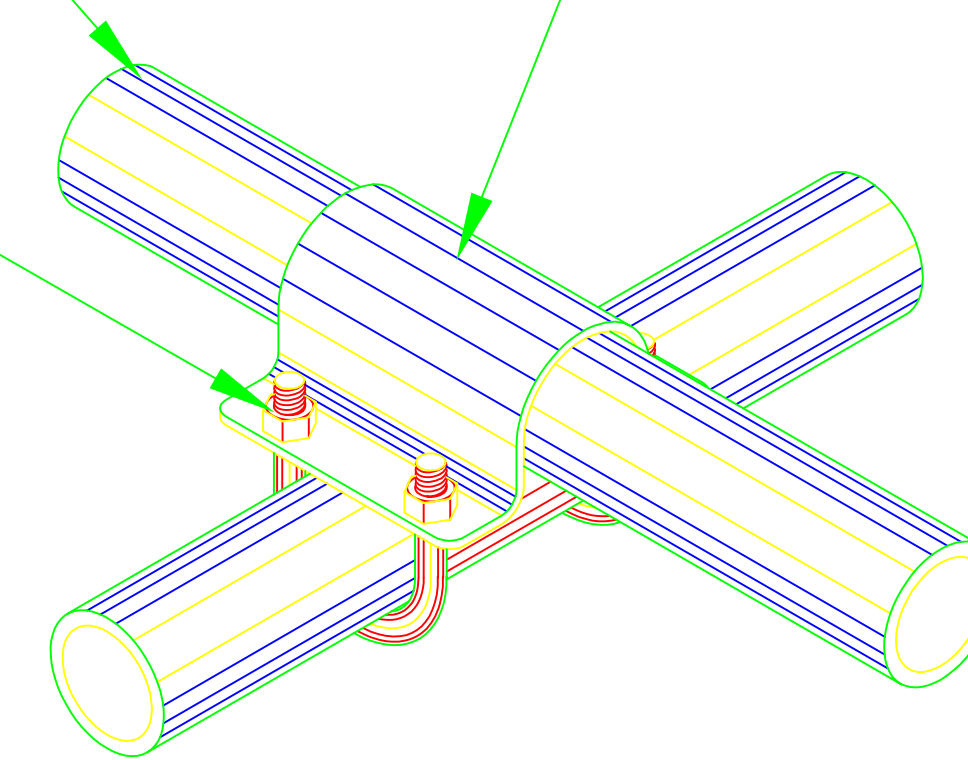
1/2" THREADED ROD & STRUCTURAL CONNECTION (BY OTHERS)



1-1/2" Sched. 40 Pipe

Rigging Innovators Overlap Bracket

3/8" U-Bolt



Use at every pipe intersection on grid perimeter and every other pipe intersection on grid interior

BACKING FOR WALL FLANGES - BY G.C

WALL FLANGE/SLEEVE

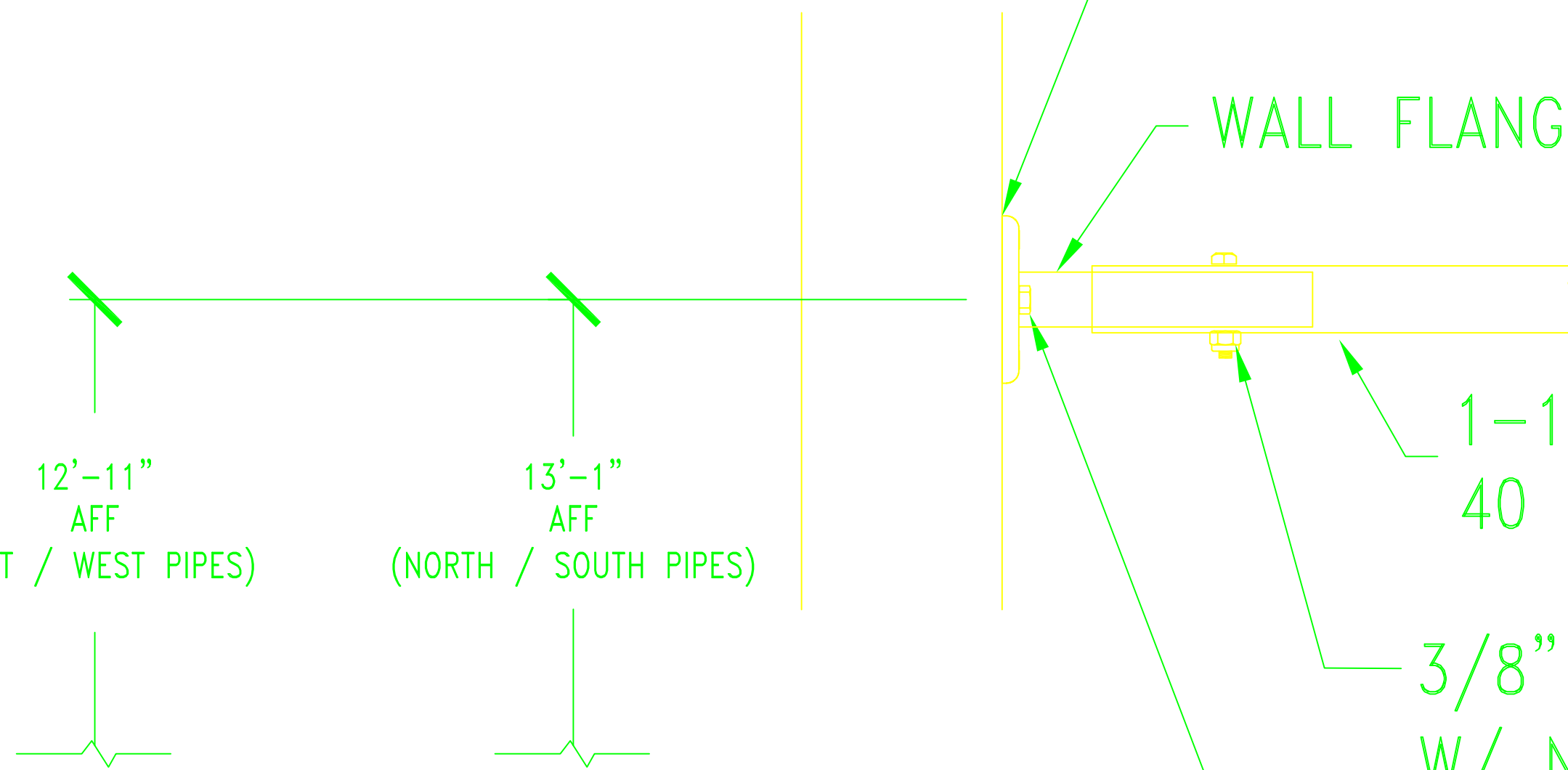
1-1/2" SCHED. 40 GRID PIPE

3/8" GRADE 5 HEX BOLT W/ NYLOCK NUT (TYP.)

(2) 3/8" BOLTS IN BACKING

12'-11" AFF (EAST / WEST PIPES)

13'-1" AFF (NORTH / SOUTH PIPES)



NO.	DESCRIPTION	BY	DATE	NO.	DESCRIPTION	BY	DATE

KEYPLAN

nonzero\architecture  
PETER GRUENEISEN, FAIA

1528 B CLOVERFIELD BOULEVARD  
SANTA MONICA CALIFORNIA 90404

310 453 8000 telephone  
310 453 8001 fax

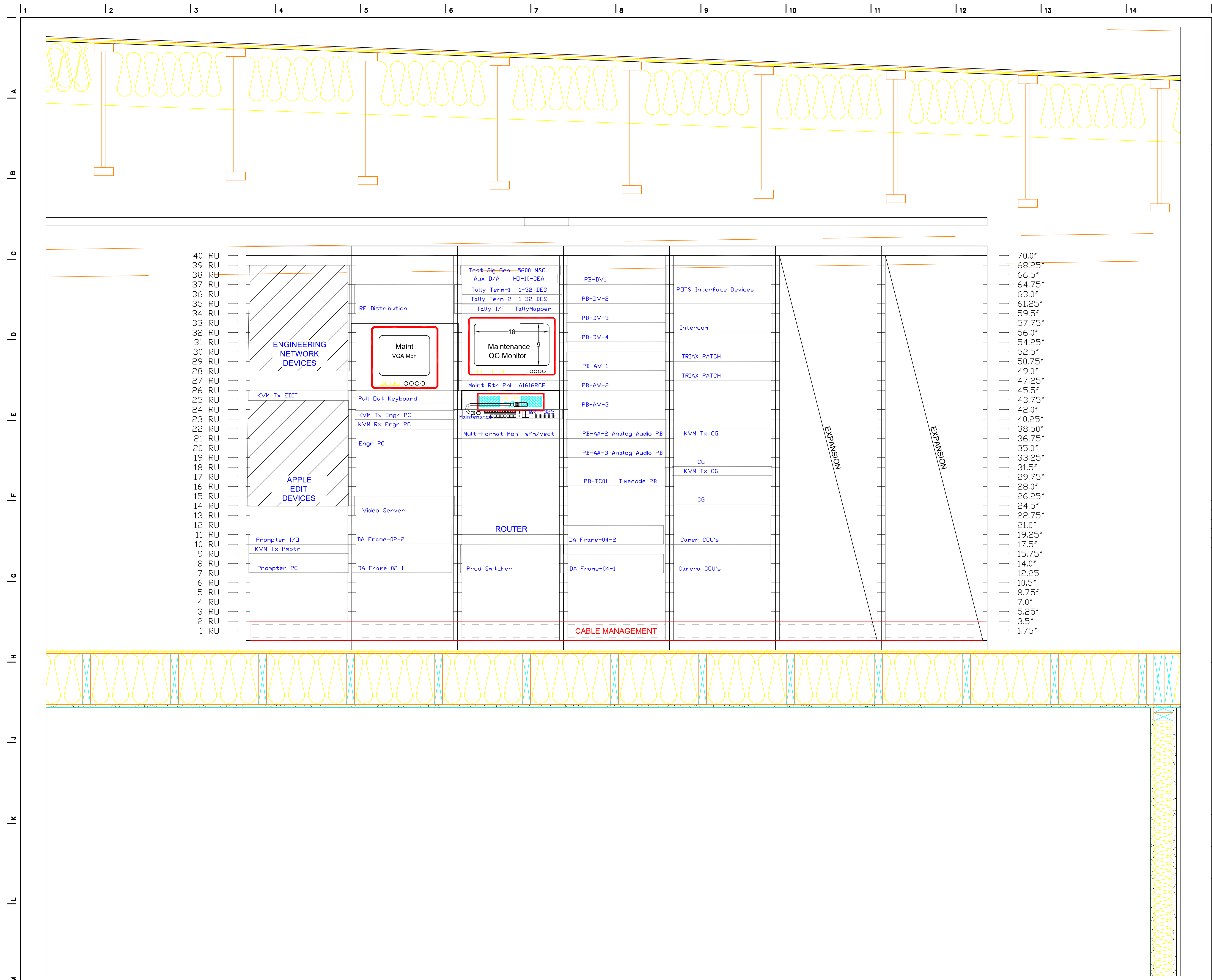
info@bauton.com

www.nonzeroarch.com  
www.bauton.com

SANTA MONICA CITY TV CITY OF SANTA MONICA  
1654 19TH STREET, SANTA MONICA, CA 90404 PROJECT NO. 6619

LIGHTING RIGGING DETAILS

DRAWING	DATE	06.02.09	PROJECT NO. 12-805
	DRAWN	-	
	REVIEWED	-	
	SCALE	1/4" = 1'-0"	
STAMP	DRAWING NO.		AV26



NO	DESCRIPTION	BY	DATE	NO	DESCRIPTION	BY	DATE

KEYPLAN

nonzero\architecture  
 PETER GRUENEISEN, FAIA

1528 B CLOVERFIELD BOULEVARD  
 SANTA MONICA CALIFORNIA 90404

310 453 8000 telephone  
 310 453 8001 fax

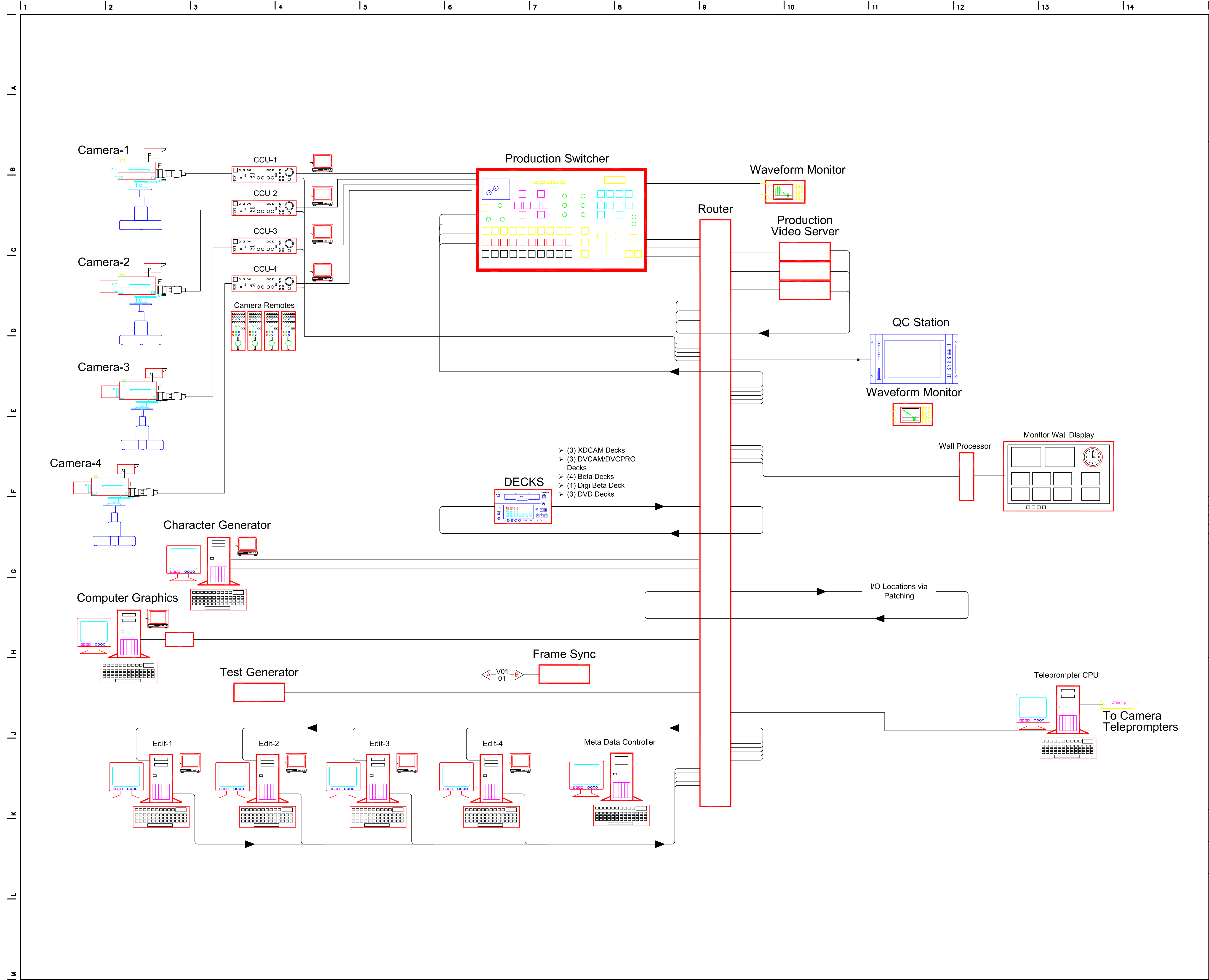
info@bauton.com

www.nonzeroarch.com  
 www.bauton.com

SANTA MONICA CITY TV CITY OF SANTA MONICA  
 1654 19TH STREET, SANTA MONICA, CA 90404 PROJECT NO. 6619

RACK ELEVATIONS ATTIC MECH AREA

DRAWING	DATE	06.02.09	PROJECT NO.	12-805	
	DRAWN	-		DRAWING NO.	AV30
	REVIEWED	-			
	SCALE	1.5" = 1'-0"			
STAMP	DATE	06.02.09	DRAWING NO.	AV30	



NO	DESCRIPTION	BY	DATE	NO	DESCRIPTION	BY	DATE

KEYPLAN

nonzero\architecture  
PETER GRUENEISEN, FAIA

1528 B CLOVERFIELD BOULEVARD  
SANTA MONICA CALIFORNIA 90404

310 453 8000 telephone  
310 453 8001 fax

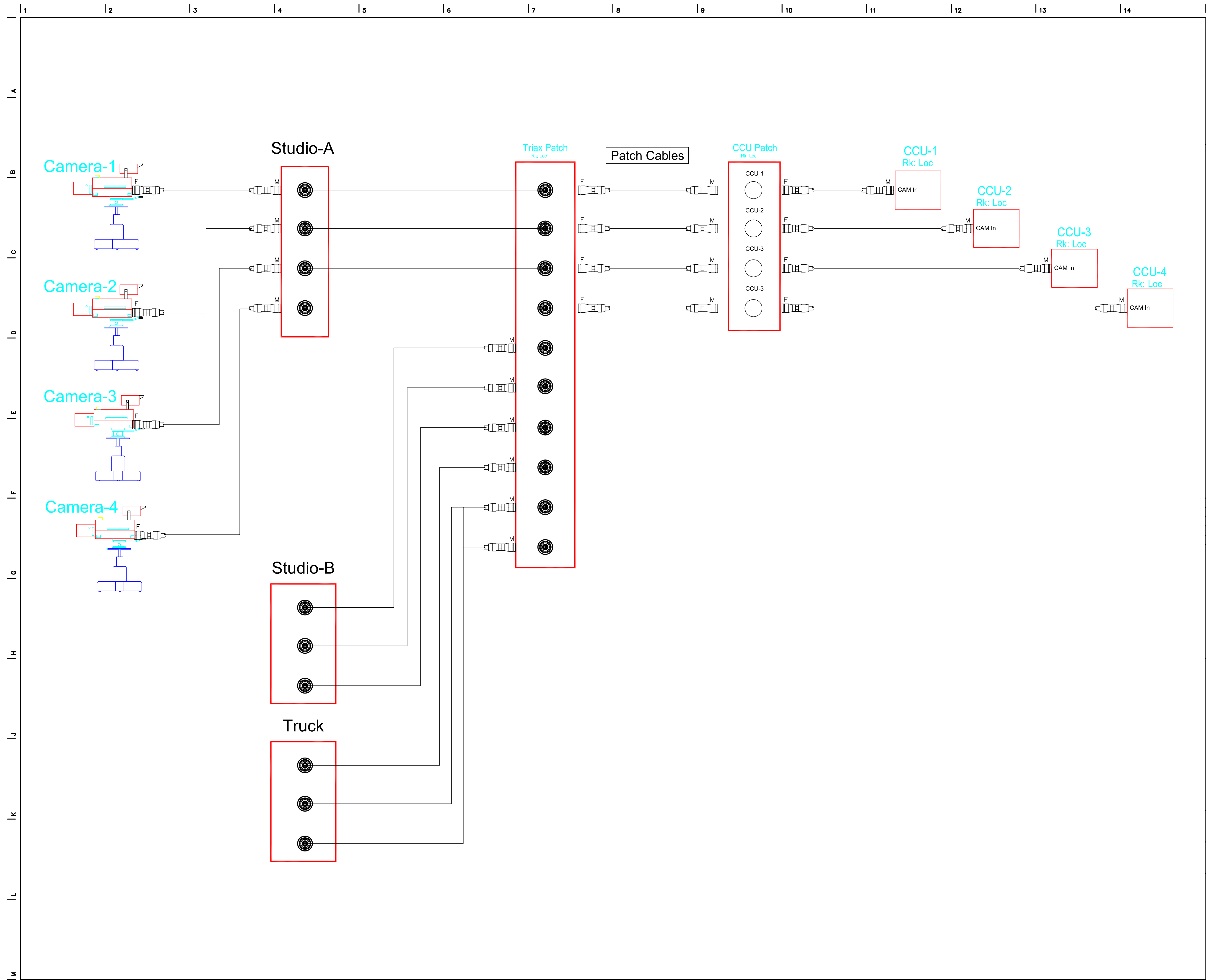
info@bauton.com  
www.nonzeroarch.com  
www.bauton.com

SANTA MONICA CITY TV      CITY OF SANTA MONICA  
1654 19TH STREET, SANTA MONICA, CA 90404      PROJECT NO. 6619

PROJECT  
AV BLOCK VIDEO

DRAWING	06.02.09	12-805
	DATE	PROJECT NO.
	-	AV31
	DRAWN	
-		
REVIEWED	1/4" = 1'-0"	DRAWING NO.
SCALE		

STAMP



NO.	DESCRIPTION	BY	DATE	NO.	DESCRIPTION	BY	DATE

KEYPLAN

nonzero\architecture  
 PETER GRUENEISEN, FAIA

1528 B CLOVERFIELD BOULEVARD  
 SANTA MONICA CALIFORNIA 90404

310 453 8000 telephone  
 310 453 8001 fax

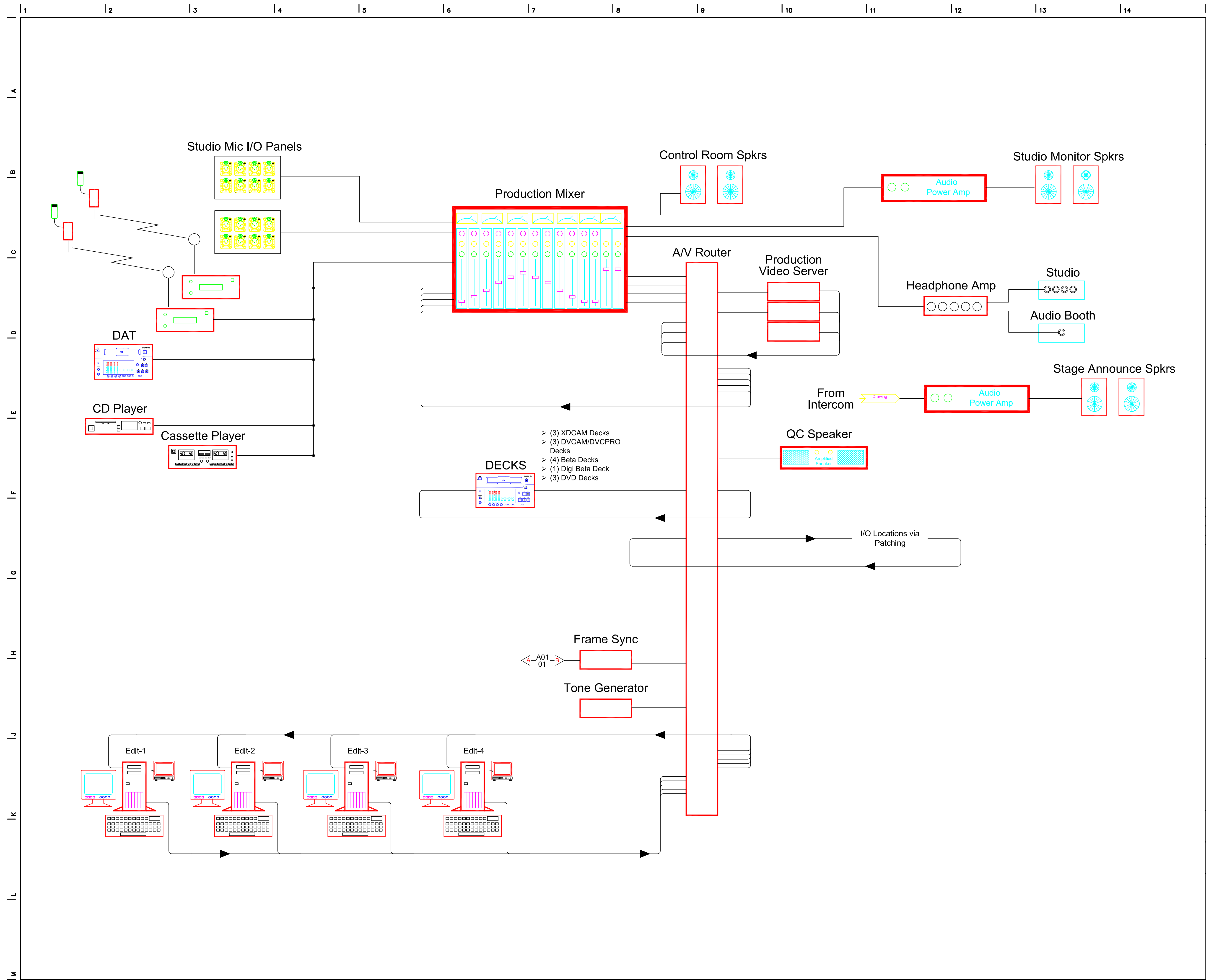
info@bauton.com

www.nonzeroarch.com  
 www.bauton.com

SANTA MONICA CITY TV CITY OF SANTA MONICA  
 1654 19TH STREET, SANTA MONICA, CA 90404 PROJECT NO. 6619

AV BLOCK CAMERA

DRAWING	DATE	06.02.09	PROJECT NO. 12-805
	DRAWN	-	
	REVIEWED	-	
	SCALE	1/4" = 1'-0"	
STAMP			DRAWING NO. AV32



- > (3) XDCAM Decks
- > (3) DVCAM/DVCPR Decks
- > (4) Beta Decks
- > (1) Digi Beta Deck
- > (3) DVD Decks

NO	DESCRIPTION	BY	DATE	NO	DESCRIPTION	BY	DATE

KEYPLAN

nonzero\architecture  
PETER GRUENEISEN, FAIA

1528 B CLOVERFIELD BOULEVARD  
SANTA MONICA CALIFORNIA 90404

310 453 8000 telephone  
310 453 8001 fax

info@bauton.com

www.nonzeroarch.com  
www.bauton.com

SANTA MONICA CITY TV PROJECT  
1654 19TH STREET, SANTA MONICA, CA 90404

CITY OF SANTA MONICA PROJECT NO. 6619

DRAWING		06.02.09	12-805
		DATE	PROJECT NO.
		-	AV33
		DRAWN	
		-	
		REVIEWED	
		1/4" = 1'-0"	
STAMP		SCALE	DRAWING NO.